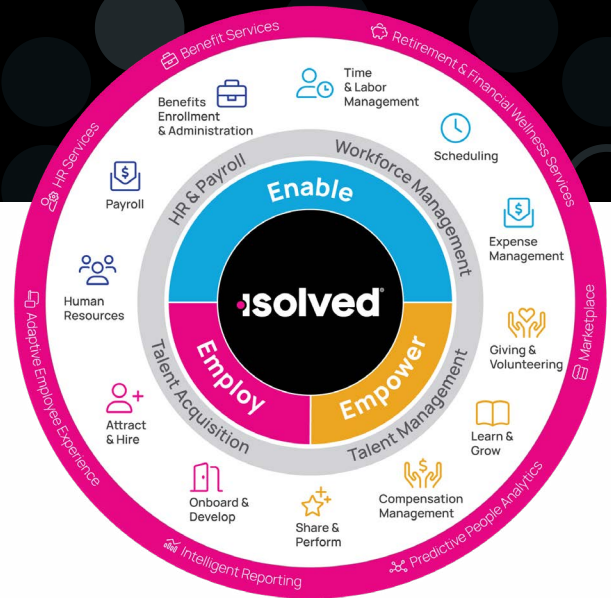


## isoloved People Cloud™ Checklist

isoloved People Cloud intelligently connects and manages the employee journey across HR, payroll, benefits, talent acquisition, talent management, workforce management and more. No matter the industry, we help high-growth organizations employ, enable and empower their workforce by transforming the employee experience for a better today and a better tomorrow.

Is your human capital management system up-to-date with all the latest features isoloved has to offer?



### Talent Acquisition

#### Attract & Hire

- ☐ Applicant Tracking system
- ☐ Job ad writing with generative artificial intelligence (AI)
- ☐ Free and premium job boards
- ☐ Branded career site
- ☐ Job templates
- ☐ Job posting
- ☐ Job applications
- ☐ Text-to-apply
- ☐ Job requisition tracking and processing
- ☐ Offer letters
- ☐ Full-service hiring
- ☐ Recruiting agency portal

- ☐ Candidate scoring and ranking
- ☐ Candidate spotlight
- ☐ Candidate matching
- ☐ Reporting and analytics
- ☐ Background checks/drug screening
- ☐ Reference checks
- ☐ One-way automated video interviewing
- ☐ Pre-employment assessments (skills, cognitive & behavioral tests)
- ☐ Calendar, email and SMS integration
- ☐ Unlimited screening questions
- ☐ Employee referral

#### Onboard & Develop

- ☐ Unlimited user roles, positions and permissions
- ☐ Configurable onboarding and offboarding
- ☐ Custom messaging
- ☐ Configurable forms
- ☐ Employee acknowledgements
- ☐ Custom links
- ☐ Compliance
- ☐ e-Verify
- ☐ WOTC processing
- ☐ Workflow automation
- ☐ Pending employee dashboard

### HR & Payroll

#### Payroll

- ☐ Employee self-service
- ☐ Direct deposit
- ☐ Pay cards
- ☐ Earned wage access
- ☐ Garnishments
- ☐ Labor and general ledger (GL)
- ☐ Percent distribution
- ☐ Next-Day ACH
- ☐ Local, state and federal tax filing
- ☐ Quarterly and year-end filing (W-2)
- ☐ Certified payroll

#### Human Resources

- ☐ Salary and job history
- ☐ Certification tracking
- ☐ Skills, education and training tracking
- ☐ Audit and compliance
- ☐ Document management
- ☐ Unlimited document storage
- ☐ Company assets tracking
- ☐ OSHA incident tracking

#### Benefits Enrollment & Administration

- ☐ Open enrollment
- ☐ Life events
- ☐ Deferred comp (401(k), 403b, etc.)
- ☐ Accrual management
- ☐ Benefit cost analysis
- ☐ ACA compliance
- ☐ COBRA alternate options
- ☐ FSA, HRA, HSA, transit, parking, tuition and lifestyle
- ☐ Carrier connections



## Workforce Management

### ☐ Time & Labor Management

- ☐ Time tracking
- ☐ Shift configuration
- ☐ Assign shifts
- ☐ Default/pattern scheduling
- ☐ Schedule notifications and alerts
- ☐ Time off/holiday requests
- ☐ Adjustments
- ☐ Meal and break configuration
- ☐ Rounding rules
- ☐ Verification workflow
- ☐ Punch notes/attestation
- ☐ Occurrence tracking

### ☐ Scheduling

- ☐ Configurable allocation rules
- ☐ Job tracking
- ☐ PBJ reporting
- ☐ Reporting and analytics
- ☐ Team calendar
- ☐ Geofencing
- ☐ Time clocks/virtual clock
- ☐ Mobile punching
- ☐ Group punching
- ☐ Submit missing punch
- ☐ Shift eligibility
- ☐ Auto hour labor allocations
- ☐ On call shifts
- ☐ Scheduler alerts
- ☐ Shift request/coverage request/shift swap
- ☐ Coverage dashboard
- ☐ Employee unavailability

### ☐ Workforce Scheduling

- ☐ Staff count types
- ☐ Staffing rules
- ☐ Staffing summary
- ☐ Schedule by shift
- ☐ Open shifts
- ☐ Notifications to fill open shifts

### ☐ Expense Management

- ☐ Expense tracking
- ☐ Employee entry
- ☐ Delegate entry
- ☐ Admin entry
- ☐ Payroll reimbursement
- ☐ Copy expense
- ☐ Business purpose tracking
- ☐ Mileage tracking/calculations
- ☐ Per diem tracking/calculations
- ☐ Configurable fields
- ☐ Multiple policy tracking
- ☐ Multilevel approval processing
- ☐ Email alerts
- ☐ Expense limit notifications
- ☐ Non-reimbursable expense tracking
- ☐ IRS category tracking
- ☐ Expense importing
- ☐ Reporting and analytics
- ☐ Optical character recognition (OCR)

## Talent Management

### ☐ Share & Perform

- ☐ Employee pulse surveys
- ☐ Collaboration tools
- ☐ Rewards and recognition tools
- ☐ Goal setting and monitoring
- ☐ Performance reviews
- ☐ 360-feedback and review process
- ☐ 9-box talent grid tool
- ☐ Employee feed, bulletins and praise wall
- ☐ Leaderboard and gamification
- ☐ Employee Reward Store
- ☐ Job history records
- ☐ Supervisor rollback and change log

### ☐ Learn & Grow

- ☐ Learning management system (LMS)
- ☐ Comprehensive dashboard and reporting
- ☐ Configurable curriculum
- ☐ SCORM compliant courses
- ☐ Content library
- ☐ Industry-specific and topical playlists
- ☐ AI-powered search tools and chatbot
- ☐ Social learning tools and gamification
- ☐ Badges and certifications
- ☐ Training recommendations

### ☐ Compensation Management

- ☐ Compensation planning
- ☐ Configurable eligibility rules
- ☐ Automatic reminders
- ☐ Comprehensive dashboard
- ☐ Seamless payroll integration

### ☐ Giving & Volunteering

- ☐ Network of over two million non-profit organizations
- ☐ Corporate volunteering and social causes campaigns
- ☐ Campaign creation
- ☐ Automated payroll donations
- ☐ Company matching
- ☐ Tax reporting
- ☐ Employee and campaign spotlight
- ☐ Program goals and milestones



## Platform

### ☐ Predictive People Analytics

- ☐ Centralized analytics
- ☐ Comprehensive dashboards
- ☐ Predictive modeling
- ☐ Historical trend analysis
- ☐ Benchmark Insights for salary, tenure and turnover
- ☐ Key events overlay
- ☐ Voice navigation and Virtual Assistant
- ☐ Artificial Intelligence

### ☐ Adaptive Employee Experience

- ☐ Any device, anywhere, anytime access
- ☐ Employee self-service
- ☐ Manager-supervisor self-service
- ☐ Downloadable mobile app

### ☐ Employee Marketplace

- Exclusive Perks and Discounts at no cost, including:
- ☐ Travel-related purchases
- ☐ Events
- ☐ Dining and wellness access
- ☐ Electronics
- ☐ Retail and apparel

### ☐ Intelligent Reporting

- ☐ 600+ delivered reports
- ☐ On-demand reporting
- ☐ Report writer

### ☐ Conversational Virtual Assistant

- ☐ Real-time access to HR info in the flow of work
- ☐ Microsoft Teams chat integration
- ☐ AI-based natural language processing
- ☐ Configurable document knowledge base

Missing some features or want to learn more about how isoloved People Cloud is best suited for all your HR needs? Call us at 828.252.0029 (Press 1).



info@platinum-arp.com  
Platinum Group  
www.platinum-arp.com